

Environment Policy

AffinityWater

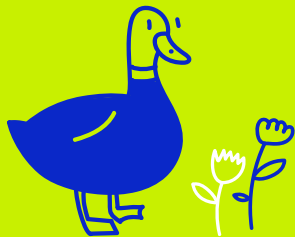
Our environmental ambition is to:

Leave the environment in a sustainable and measurably improved state.

This is the first ambition statement set out in our Strategic Direction Statement. To achieve this ambition, everyone will play their part to contribute to delivering our purpose.

Our purpose

Our purpose is to provide high quality drinking water and to take care of the environment for our communities now and in the future.



Our commitment

Water is a precious resource and essential for life but it is also a finite resource that we take from and return to our diverse and unique local environment. Our operating area includes four Areas of Outstanding Natural Beauty, a range of designated sites including Sites of Special Scientific Interest and Local Nature Reserves. Our supply area includes Dungeness, the largest and most diverse stable vegetated flint shingle beach in Europe and is also home to around 10% of England's chalk streams. These are globally rare and important habitats that support a variety of plants and animals.

Providing high quality drinking water in a region with such a diverse range of habitats poses challenges, particularly in the face of climate change and a growing population. We will continue to seek to improve our understanding of our local environment and interactions with it and use these insights to inform our decision making so that we protect and enhance our local environment for current and future generations.

Our aim

It's important that we leave the environment in a measurably improved state, and that we can understand and monitor both our environment and our activities. We already have an industry leading environmental monitoring network and will further expand our monitoring. We will measure how our plans and activities impact on the environment whilst considering the broader definition of "value" through the use of a "six capitals" approach that includes natural capital. We will share our environmental data with our customers, communities and stakeholders to ensure transparency and enable an improved understanding of these complex systems. Our environmental data will underpin everything we do and our decisions, plans and policies will be based on evidence-based science and best practice.

We will ensure that our long-term strategies prepare us for the effects of climate change both on our assets and the environment in which we operate. We will reduce our operational and embedded carbon emissions in line with our net zero carbon commitments. We

recognise that we do not yet have all the answers, so we will work with industry, regulators and our supply chain to adapt our plans and incorporate innovation and new technologies as appropriate in support of this ambitious goal.

We will create resilient catchments that can support a diverse range of habitats, while protecting water resources and water quality. Our supply duty will be met through a sustainable abstraction regime that optimises where and when we take water from our environment.

We will become a centre of excellence for collaboration with our partners by facilitating and driving active engagement with landowners, tenants, river groups, our environmental regulators and other organisations to fulfil our ambition. We cannot solve these challenges alone and only by working in partnership will we deliver our environmental commitments and achieve our company vision.

We will always seek to go beyond our legal and statutory obligations

A handwritten signature in blue ink that reads "Keith Haslett".

Keith Haslett, CEO, Affinity Water

